

A BETTER WAY TO ADDRESS MARYLAND'S BEHAVIORAL HEALTH CRISIS



KEEP THE DOOR OPEN MD
Behavioral Health Coalition

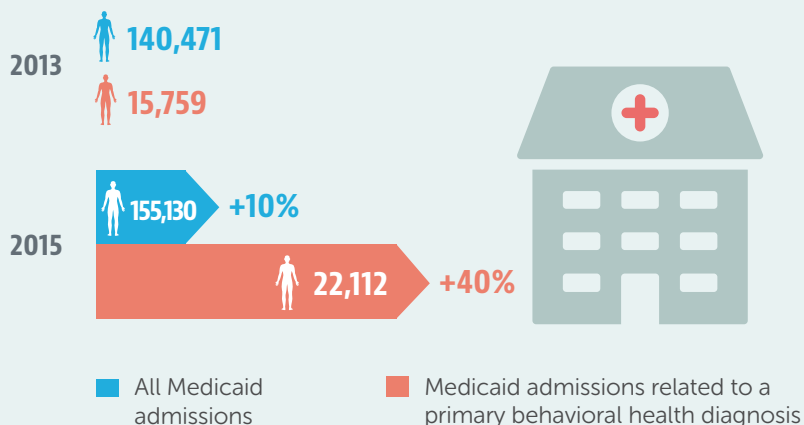
DEMAND IS SKYROCKETING

Since 2013, Medicaid **hospital admissions** have increased 10%.

During that same time, Medicaid admissions related to a primary **behavioral health diagnosis** have increased — nearly 40%.

THAT'S 3X AS FAST

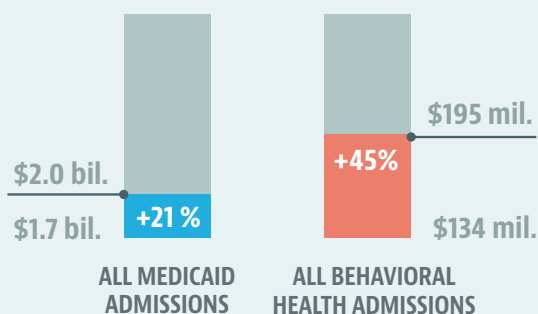
PERCENT INCREASE IN MEDICAID ADMISSIONS FROM 2013-2015



... AND LEADS TO INCREASED HEALTHCARE SPENDING

While spending for Medicaid **hospital admissions** have risen 21%, spending for Medicaid **behavioral health admissions** have risen 45%.

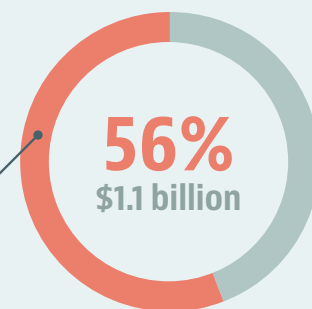
PERCENT INCREASE IN SPENDING FOR MEDICAID ADMISSIONS FROM 2013-2015



In 2015, primary diagnoses of **behavioral health disorders** accounted for **\$195 million** of Medicaid admission. Admissions with a secondary behavioral health diagnoses accounted for **\$920 million** more.

That's over **\$1.1 billion**, or **56%** of total Medicaid admissions

SPENDING ON MEDICAID BEHAVIORAL HEALTH RELATED ADMISSIONS



SOLUTION: INCREASE ACCESS TO COMMUNITY CARE

Expanding access for **community behavioral health care** is proven to reduce demand for more costly inpatient hospital admissions.

